



Community Creates Opportunities

JOURNEY21

# Executive Director's Message

Dear Friends,

We invite you to learn more about Journey21. Our website ([www.journey21.org](http://www.journey21.org)) is filled with information about upcoming events and activities, informational webinars, and admissions information. Whether you are a family considering options for your daughter or son, a volunteer looking to get involved in the community, or potential donor looking for a meaningful way to invest in the community, we welcome your interest and look forward to a conversation.

Thank you for your interest in Journey21 where we believe that community truly does create opportunities for us all.



Mike Brauer  
Executive Director

---

## Mission

To provide a safe, supportive and enriching living and learning options for adults with intellectual or developmental disabilities (IDD) in Waukesha County and surrounding communities.

## Vision

A day when every adult with IDD has the home of their choice where they can have friends, opportunities to grow, and live independently within a vibrant and inclusive community.

## Journey21's Guiding Principles

- **Community:** Create a sustainable community of trust, respect and lifelong friendships
- **Safety:** Provide a safe and supportive environment
- **Independence:** Encourage self-determination and self-advocacy
- **Wellness:** Promote the wellbeing of mind, body and soul
- **Enrichments:** Foster lifelong learning through community collaborations

A photograph of three young men standing outdoors. They are all wearing sunglasses and smiling. The man on the left is wearing a blue patterned shirt, the man in the middle is wearing a light blue polo shirt, and the man on the right is wearing a dark blue and white striped polo shirt. A dashed yellow line curves across the background behind them.

### Meet Matt, Marvin & Max: Self-Advocate Ambassadors

Journey21's residential, enrichment and social options are informed by the adults we serve.

## Dear Friends of Journey21,

Our story began in 2015 when both of us—two moms—were sitting on a high school bleacher watching our boys compete in a Special Olympics track meet. We started a conversation and then built a friendship which led to sharing our dreams for our sons. Just like any other parent, we wanted to see our children develop independence and build a bright future for themselves. The difference was that our sons were born with intellectual and developmental disabilities (IDD,) and we both found ourselves asking, “*What will life be like for our sons with IDD when we are no longer here? Where will they live? Where will they work?*”



What we discovered in our quest for answers was that there were many other families in our region trying to address the same issue. At age 21 most services and social structures offered by the public school system that support adults with IDD end, also known as “falling off the cliff.” Families are forced to search for new avenues of independence for their children with few options.

We were determined to change that future for our sons and other adults with IDD and their families, and create meaningful days with purpose for them, as well as peace of mind for ourselves and other parents.

We traveled across the country to learn about different models for residential living to find elements that aligned with our vision. The desires of individuals with IDD to live, work and play in an active and inclusive community are not any different from anyone else. Individuals with IDD want friendships, jobs, fun places to live and a sense of community.

It was those early questions that led to the startup of Journey21. Our name came about because age 21 is when families and adults with IDD begin their new journey toward independence. Life is a journey and everyone should have the opportunity to live their best life. We want our children to feel safe, loved and encouraged every day.

The heart and soul of the Journey21 community will be shaped by the very adults with IDD who will live here. We call them our Ambassadors. We want them to always have a significant role in determining what their community looks like. As a result, Journey21 will create a Resident Advisory Board to provide input on an ongoing basis to our Board of Directors.

We are excited about the future for our boys and the adult children of so many families in our community. We are grateful and heartened by how this project has been embraced by Oconomowoc, our neighbors, the community, but especially families and adults with IDD.

When you are asked to contribute, we hope you reply with a resounding “yes” and a generous gift to address the unmet needs of adults with disabilities in our community.

Thank you,

A handwritten signature in black ink that reads 'Susan K. Marriott'.

Susan Marriott  
Co-Founder

A handwritten signature in black ink that reads 'Sheila Frisinger'.

Sheila Frisinger  
Co-Founder



Excitement was in the air as the groundbreaking for the new Enrichment Center Groundbreaking took place on May 11th. Sheila and Kevin Frisinger, Susan and Jim Marriott and their sons, Matt, Max, and Marvin, joined city leaders, the construction team, architects, staff, and a number of donors to make it official by ceremoniously shoveling dirt on the site. The event took place on the southeast corner of Old School House Road and Hackney Way in Pabst Farms followed by a reception at Hackney House Clubhouse. The Enrichment Center is expected to open sometime in the second quarter of 2023.

# The Need for Journey21

Journey21 is the result of passionate and mission-driven families who came together in pursuit of building a community based in love and acceptance, dedicated to helping adults with an intellectual or developmental disability (IDD) achieve their fullest potential and live their fullest lives.

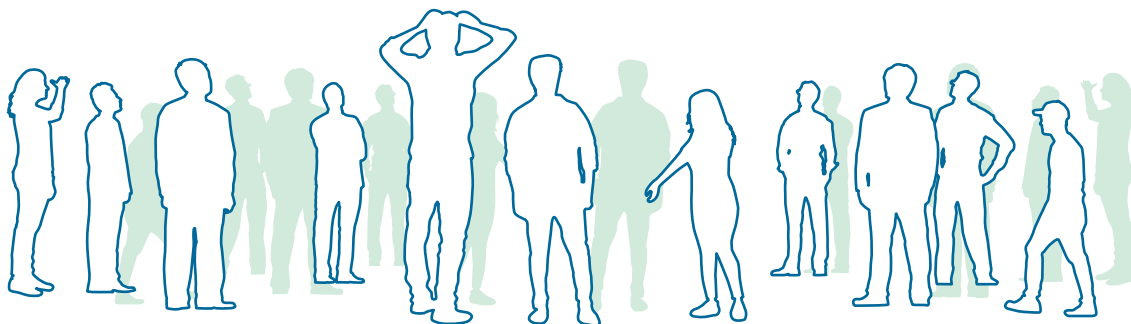
Our plans are big, but so is the need. There are more than 39,000 adults with IDD in Wisconsin—far more adults with IDD than there are safe, supportive and dynamic residential settings designed to accommodate their needs and wants in life. More than 50% of adults with IDD in Wisconsin who have waiver funding that could enable them to live in a home of their own, still live in their family home because of an extreme shortage of living, learning and social options. This is concerning due to the fact that their caregivers, many who are over the age of 60, may soon need caregiving for themselves.

Members of the IDD community face few options—continue to live with their parents; reside in what was formerly institutional housing; or, more recently, pair with a small number of like-minded individuals in group homes scattered within residential communities. While these options may have been designed with the best intentions and work for some individuals, research and personal experience prove these living options do not meet the needs and wants of many individuals or their families and caregivers. This can lead to the isolation of individuals who want nothing more than to have friends, work, and to live within an active community, just like any adult would.



THERE ARE MORE THAN  
39,000 ADULTS  
WITH IDD IN WISCONSIN.

OVER 50% OF  
ADULTS WITH IDD  
REMAIN IN THEIR FAMILY HOME  
DUE TO EXTREME SHORTAGES IN  
LIVING AND SOCIAL OPTIONS





Housing isn't the only shortage for adults with IDD. There are also chronic shortages of learning, vocational, and social opportunities. And the shortages became even more evident with the COVID-19 pandemic. Shelter-in place orders and shutdowns of non-essential businesses, plus social distancing, exacerbated the social isolation many adults with IDD face daily.

Many families face challenges trying to get the information that they need along the journey toward adulthood and independence for their sons and daughters with IDD. They often spend years trying to find basic information, financial resources, healthcare professionals, and services that could help their children, and the learning curve is overwhelming.

To help provide these resources in one place, Journey21 will offer a resource library, informational workshops, webinars, programs, activities, and services for families and adults through its new Enrichment Center. The Enrichment Center is the heart and soul of the Journey21 community. It will be open to everyone in the community and will also be used by other nonprofits, agencies, organizations, and schools that serve and support adults with IDD and their families. It is our intent that more opportunities for adults with IDD will be created through these collaborative efforts.



# What is Journey21?

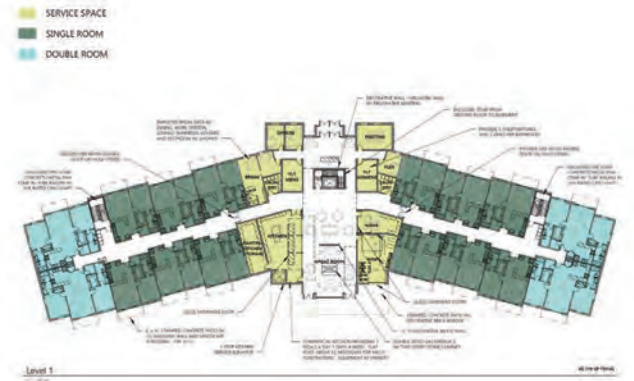
Journey21 at Pabst Farms is a Residential Community and Enrichment Center for adults with intellectual or developmental disabilities (IDD) located in southeastern Wisconsin on a 12-acre parcel in the Pabst Farms development in Oconomowoc. The parcel was selected because of its picturesque natural setting and the close-knit Oconomowoc community. Another factor in location selection, and why Pabst Farms was a prime location, was close proximity to restaurants, recreation, jobs, and medical clinics, which is important given that transportation is often a barrier for adults with IDD.

Journey21 is comprised of Residences, Programs and Outings, and an Enrichment Center.

## Fully-accessible Residences

Our community will provide a safe and inclusive neighborhood of high-quality supportive one- and two-bedroom condominiums and cottages with amenities that are designed for the needs and aspirations of adults with IDD. The main residential structure in our community will be The Lodge, a modern and stylish one-story building containing condominiums. We will also have the option of fully accessible one-bedroom and two-bedroom cottages. The residences will be situated around a common, pedestrian-oriented greenspace with vehicular traffic directed around the perimeter of the housing and the building fronts facing into the greenspace to promote engagement with neighbors.





LODGE FLOOR PLAN

SITE PLAN



The plans call for residences for approximately 40 adults. It is anticipated that Journey21 residents, age 21 and older, will have a range of abilities, support needs and mobility. Just because an adult with IDD may not be fully independent doesn't mean they cannot be a part of our community.





## Programs and Outings

Since July 2021, Journey21 has been offering a wide variety of unique programs, outings, clubs and social skills classes. Through these offerings, participants explore vocational and educational interests and enjoy robust social lives in our community. A wide range of activities such as baseball games and basketball camps, bowling, park walks, fairs, art classes and visits to Milwaukee and Madison attractions are available. There is so much excitement when our calendar of events is posted!

We offer early evening and weekend activities such as camps, movie and dinner nights, dance classes and sporting events. We started a “Giving Back to the Community” program which is a cornerstone of Journey21. Our participants have volunteered at food pantries and animal shelters, leaving each facility with big smiles and full hearts. An array of Journey21 clubs are also available to help individuals find their hobby or interest, and plans for expanded educational offerings are underway!

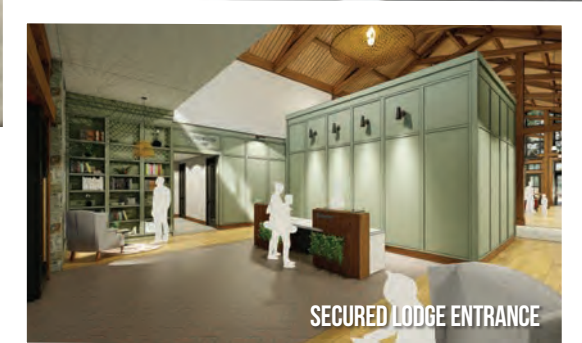


OUTDOOR GRILLING AND GATHERING SPACE





SPORTS COURTS



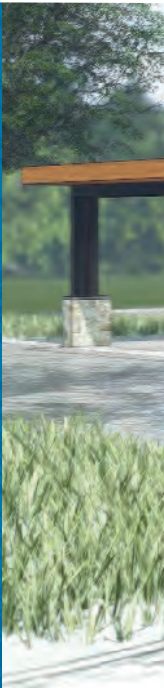
SECURED LODGE ENTRANCE





## Enrichment Center

The Enrichment Center will be a 10,000 square-foot building that will serve as a venue for programs, classes, events and social gatherings for our residents and other adults with IDD in the community. There will be large multipurpose rooms for indoor activities and gatherings, studios for dance, yoga or stretching, flexible space with a patio and fireplace, art and music rooms, a technology lab, a resource library; as well as, a conference room and teaching kitchen. The Enrichment Center will be used by other nonprofits, agencies, community organizations, and schools that serve and support adults with IDD and their families.





ENRICHMENT CENTER PATIO



ENRICHMENT CENTER



# Community Life

Journey21 residents will enjoy the full benefits of independent living in the community in a safe, supportive, and inclusive setting. Life at Journey21 will foster the same opportunities, experiences, and outcomes realized by adults without disabilities. Friendships and social engagement will replace isolation and loneliness. Meaningful community involvement will elevate self-esteem, happiness, and wellbeing. Independence will enable peace of mind for families.



1 & 2-BEDROOM CONDOMINIUMS



GREAT ROOM DINING



JOURNEY21 GREAT ROOM



COTTAGES



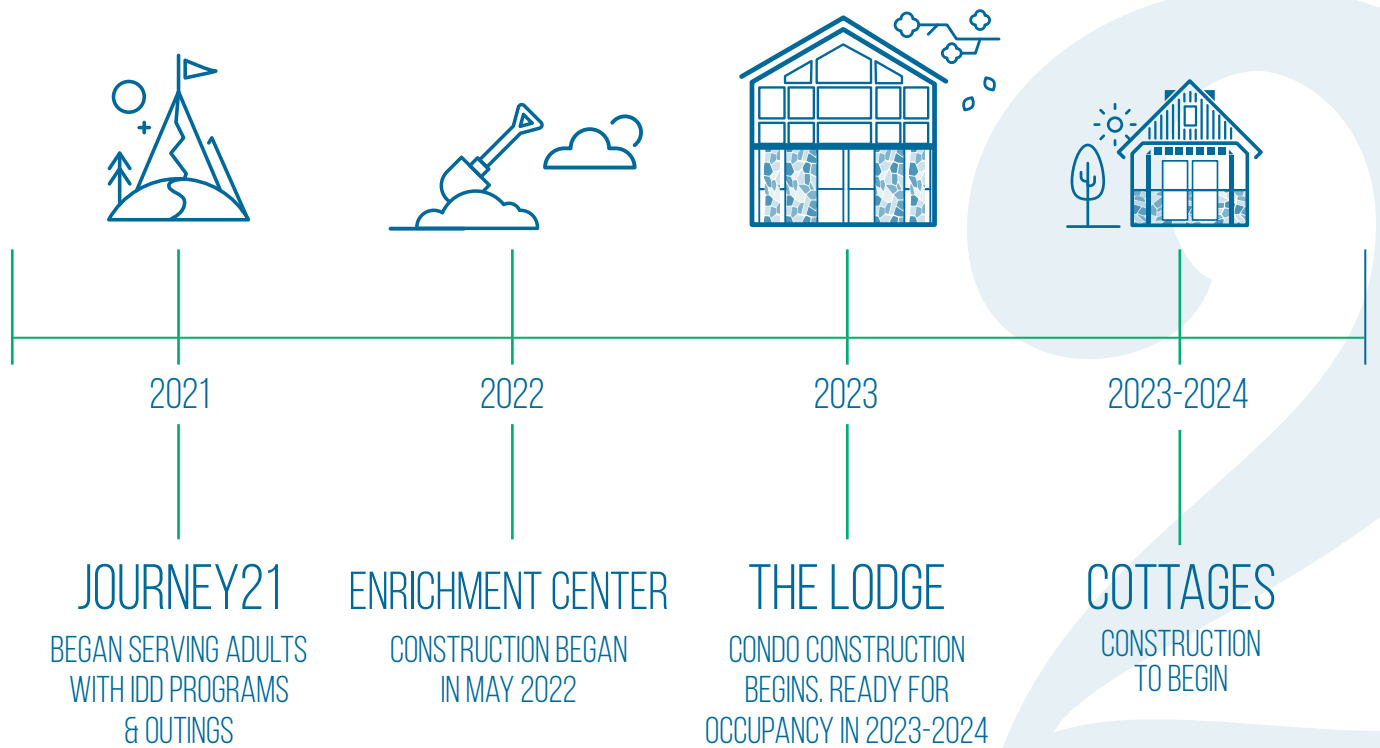
FIRE PIT



JOURNEY21 GREENSPACE & PATHWAYS

# Timeline

In summer of 2021, Journey21 began serving adults with intellectual and developmental disabilities offering a variety of Programs and Outings. In spring/summer of 2022, construction on the Enrichment Center is expected to begin. The Lodge which will house condominiums and amenities is expected to begin in 2023, completed and ready for occupancy by the end of 2024. Construction of the cottages is expected in 2023-2024.



# Donor Recognition

Our fundraising goal is \$18 million. Contributions can be made in the form of cash, stock, cryptocurrency, or a multi-year pledge. Opportunities are available that designate specific areas of the buildings or campus in your name, your family's name or in memory of a loved one. A plaque will be placed in or on the respective area or item being funded.

Every gift will be thoughtfully acknowledged. All donors who contribute to Journey21 will be listed in our annual report and in a visible location in the Enrichment Center.

Donations to the capital campaign of \$2,500 or more will be included in Journey21's permanent lobby signage located in the Enrichment Center.

An endowment fund will be created to provide for Journey21's ongoing financial needs through a partnership with the Waukesha County Community Foundation. Named, endowed funds are available with gifts of \$25,000 or more.

You may want to consider a gift of appreciated stocks or directing your IRA required minimum distribution to Journey21. Additional options include naming Journey21 as a beneficiary on your life insurance policies or making a provision in your will or estate plan in the form of a bequest.

For additional information on how you can support the work of Journey21 through a charitable gift, please contact:

**Sheila Frisinger**

Co-Founder

262-236-5021

[sheilafrisinger@journey21.org](mailto:sheilafrisinger@journey21.org)

**Susan Marriott**

Co-Founder

262-236-5021

[susanmarriott@journey21.org](mailto:susanmarriott@journey21.org)

**Mike Brauer**

Executive Director

414-704-4485

[mikebrauer@journey21.org](mailto:mikebrauer@journey21.org)

Thank you for considering a gift to Journey21. Together we will build a community based in love and acceptance, dedicated to helping adults with an intellectual or developmental disability (IDD) achieve their fullest potential and live their fullest lives.

*Life is a Journey. Live your best life.*

Meaningful days for our sons  
and daughters.

Peace of mind for families.



**STAY CONNECTED**

Visit [Journey21.org](https://Journey21.org)  
to sign up for news  
and updates.

**JOIN US**

Register with us at  
[Journey21.org](https://Journey21.org) to join  
our community events.

**DONATE**

Support our mission at  
[Journey21.org/Donate](https://Journey21.org/Donate).

Journey21

2727 North Grandview Boulevard, Suite 301 | Waukesha, WI 53188

[www.journey21.org](https://www.journey21.org)

For more information contact us at:  
(262) 236-5021 | [info@Journey21.org](mailto:info@Journey21.org)



Journey21



Journey21